

The new intensive care unit is complete

Construction is now complete on the new intensive care unit on level 2 of the Macquarie Building. The upgraded and expanded service will open in September following an operational commissioning process. This service is part of the new critical care floor which includes a coronary care unit, a cardiac catheterisation laboratory (the first of its kind at Dubbo Hospital) and a stroke unit.

Only minor works remain in the Macquarie Building to finish off some public spaces and corridors before Dubbo Hospital Redevelopment Stages 3 & 4 is fully complete.

The hospital is looking forward to the official opening of the building in the coming months.

Congratulations to everyone involved in the planning, design and construction of our new world-class Macquarie Building.



Front of the Macquarie Building

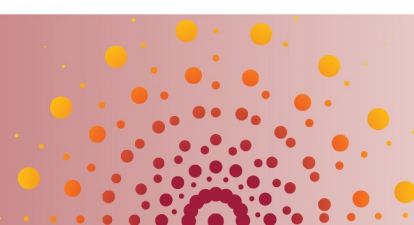
Dubbo Hospital's heritage and history recognised

This month, the hospital installed an 18-metre heritage and history wall along the main corridor of the new Macquarie Building. The wall was designed to capture key moments in the hospital's 150-year history, and show its growth into a major referral health service. It also tells the story of some key people in history who have made Dubbo Hospital what it is today.

Thank you to everyone who contributed to this project including Dubbo Hospital's librarian, Donald Keast, Health Infrastructure, the Dubbo Regional Council, hospital staff (current and past) and community members. We could not have done it without you.

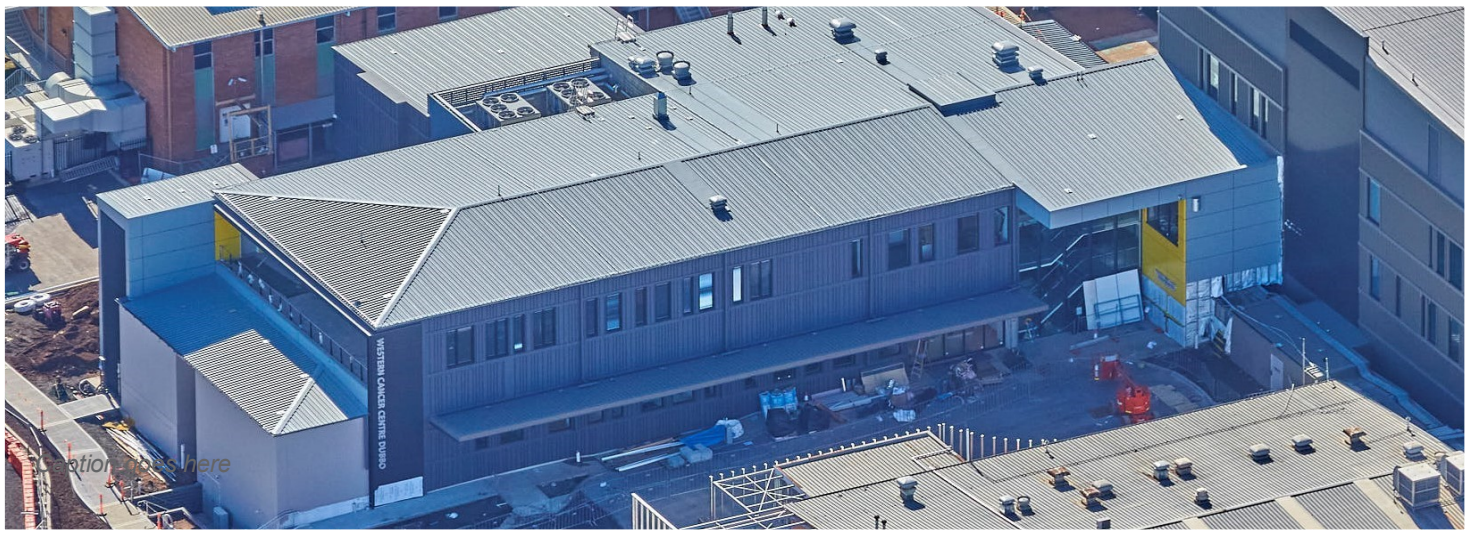
We had enough photos and stories to fill 100 metres of wall and would have loved to share it all.

Next time when you are at Dubbo Hospital, take a moment to check it out and learn something new about our amazing health service.



Western Cancer Centre construction on the home stretch

Construction of the new cancer centre is progressing well (see below). Major medical equipment has been installed and the building contractor, Lipman is now focused on the interior finishes, witness testing, external façade work and landscaping. When complete, the new centre will provide radiation therapy and chemotherapy services as well as advanced diagnostic services thanks to a new PET CT Scanner—the first of it's kind in the region! Construction is scheduled for completion in the coming months. We can't wait to show you around. Stay tuned for more information about our upcoming public open day.



New car parks underway

Since the sod turn in March this year, work has been progressing well on the two new car parks on campus. The ground level car park close to the hospital main entry is scheduled to be finished in the coming months and will open to patients and visitors soon after.

The multi-storey car park on the western side of the campus has also progressed and preparations are underway for the first concrete pour in the coming weeks.

These new car parks will deliver more than 350 additional spaces for staff, visitors and patients—supporting the uplift in services as a result of the hospital's major expansion and upgrade.



Site of the new multi-storey car park

